



FOOD WASTE DISPOSER

Owner's Manual & Installation Instructions

 **Electrolux**

www.electroluxprofessional.com.mk



Electrolux

EN

**IMPORTANT
SAFETY
INSTRUCTIONS.
READ ALL
INSTRUCTIONS
BEFORE USING**

WARNING!

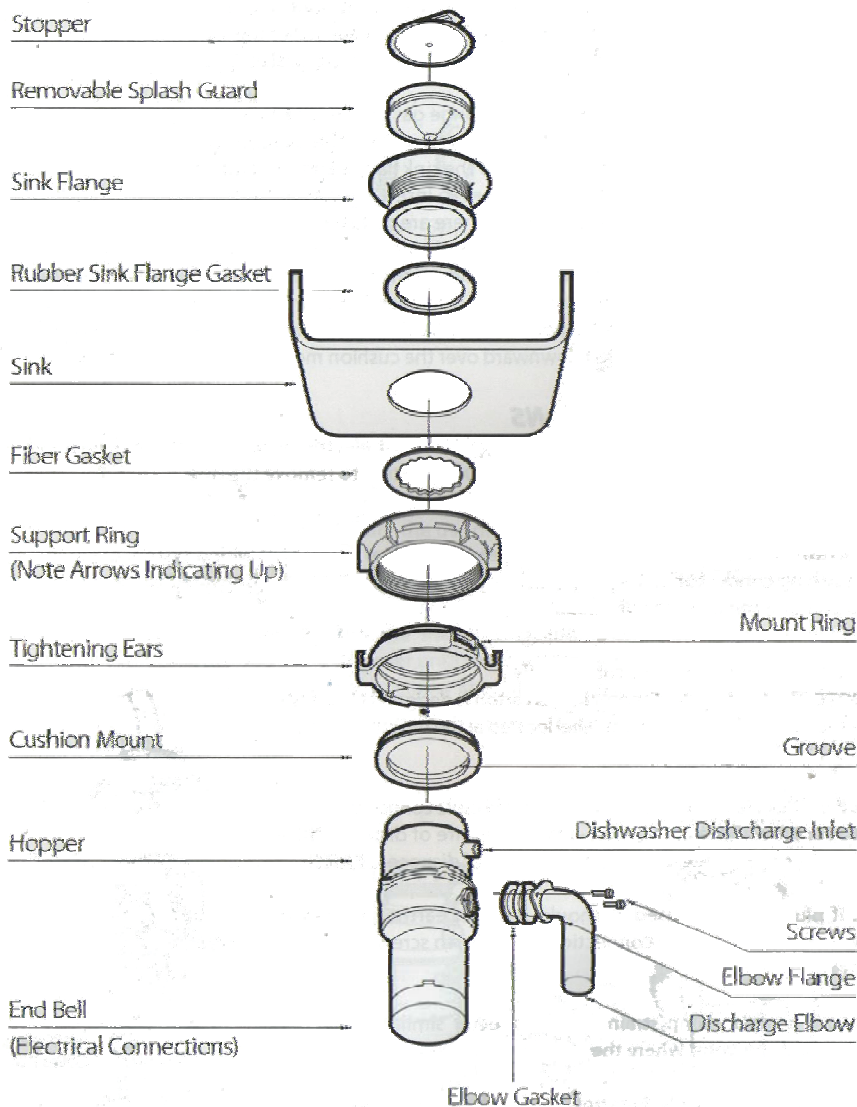
When using electrical appliances, basic safety precautions should be followed, including the following:

SAFETY PRECAUTIONS

- Use this appliance only for its intended purpose as described in this Owner's Manual.
- Read all the instructions before using the appliance.
- To reduce the risk of injury, close supervision is required when an appliance is used near children.
- Do not put fingers or hands into a waste disposer.
- Turn the power switch (normally a wall switch) to the off position before attempting to clear a jam or remove an object from the disposer.
- When attempting to loosen a jam in a waste disposer, use a long wooden object such as a wooden spoon or a broom handle.
- When attempting to remove objects from a waste disposer, only use long-handled, non-magnetic tools or utensils, since the disposer may be actuated magnetically.
- To reduce the risk of injury by materials that may be expelled by a waste disposer, do not put the following into a disposer:
 - a. Clam or oyster shells
 - b. Drain cleaner
 - c. Glass, china or plastic
 - d. Large whole bones
 - e. Metal, such as bottle caps, tin cans, utensils or aluminum foil
 - f. Hot grease or other hot liquids
 - g. Whole corn husks
 - h. Tea or coffee bags
- When not operating the disposer, leave the stopper in place to reduce the risk of objects falling into the disposer.
- Do not operate disposer unless splash guard is in place.
- For proper earthing instructions see the **ELECTRICAL CONNECTION** section of this manual.
- If you are not familiar with electrical power and procedures, call a qualified electrician.

INSTALLATION OF MOUNT ASSEMBLY **(Read completely before starting)**

COMPONENTS



NOTE:

Pay close attention to the order of mount assembly parts, as they have been correctly assembled by the factory.

1. Disassemble the sink flange assembly from the disposer by turning the mount ring to the left (clockwise) and removing it.
2. Raise mount ring toward top of sink flange. Remove mount ring. You may want to practice installing the cushion mount at this point before you are under the sink.
3. Unscrew support ring from sink flange and remove fibre gasket. You are now left with sink flange and rubber gasket.
4. Insert sink flange through rubber sink flange gasket into sink hole.
5. From underneath the sink, slip the fiber gasket onto the exposed sink flange. With arrows pointing up, screw the support ring onto the sink flange and hand tighten until the sink flange will not move. At this point you may want to insert the stopper in the sink and fill with water to check the sink flange seal and insure there are no leaks.
6. Place the mount ring over the sink flange and hold in place while installing the cushion mount (large side down) so the groove on the inside of the cushion mount fits over the lip on the sink flange, similar to putting the lid on a plastic container. Run your fingers around the entire cushion mount with slight pressure. Do not press too hard. When the cushion mount is properly seated, the mount ring can be pulled downward over the cushion mount and will be free to turn.

ELECTRICAL CONNECTIONS

NOTE: A qualified electrician is required. Disconnect electric power to disposer circuit before installation. Turn the circuit breaker to the OFF position to remove the fuse.

EARTHING INSTRUCTIONS

This appliance must be connected to an earthed, metal permanent wiring system or equipment -earthing conductor must be run with the circuit conductors and connected to the equipment-earthing terminal on the disposer.

a. Connect disposer to AC current only

NOTE: The food waste disposer in this carton is designed to operate as the voltage indicated on the label located at the bottom of the disposer.

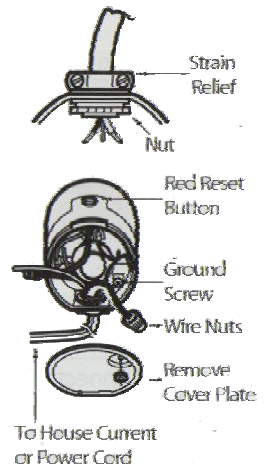
b. If use flexible metal shrouded cable: install cable connector in hole

NOTE: Brown wire of disposer -**LIVE**, Blue wire of disposer **NEUTRAL**, Green/Yellow wire and earth screw of disposer -**EARTH**.

c. If plug-in cord is used, it should have an earthed plug with earth wire attached for connection to the earth screw at the bottom of the endbell.

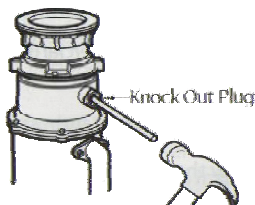
d. Use a cable clamp strain-relief connector similar to the one shown, at the point where the power cord enters the disposer.

e. If your power supply does not include an earth wire, a qualified electrician should install a proper earth.



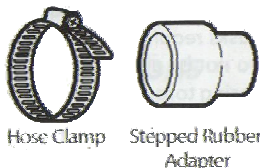
A. Knock Out Plug

Using a blunt instrument (steel punch or wooden dowel), knock out entire plug. Do not use a screwdriver or sharp instrument. When knockout plug falls into disposer, you may remove it or simply grind it up when the disposer is used. This will not damage the disposer in any way, but may take some time to grind, over the course of several uses.



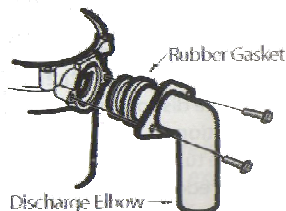
B. Connect Hose

Connect the dishwasher hose using a hose clamp. If the hose size is different, you will need a stepped rubber adapter.



Attaching The Discharge Elbow

Connect the discharge elbow to the disposer. Make sure all plumbing connections are tight.

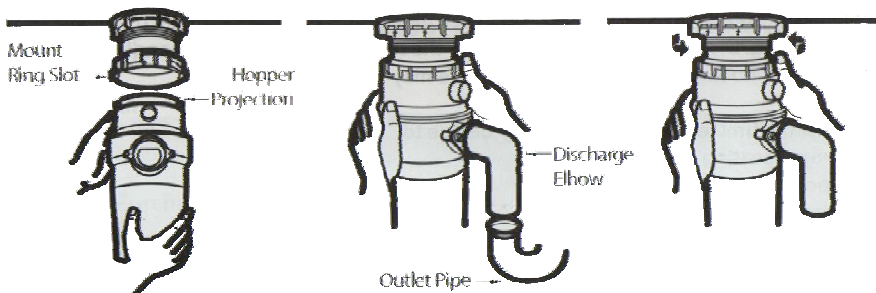


Some installations may require the use of flexible drain pump



CONNECTING DISPOSER TO SINK

1. Line up the disposer under the sink flange. Guide the hopper of the disposer until the projections into the mount ring lines up with the outlet pipe.
2. Turn the mount ring about 1/4" to the right so that the disposer is temporarily supported.
3. Turn mount ring to the right until it locks up tight. Hopper projections must be to the extreme left of the mounting slots. If the mount ring is hard to turn, you may add a small amount of petroleum jelly or liquid soap to the hopper projection.



4. Check the unit for leaks 24 hours after installation and first operation.

OPERATING INSTRUCTIONS

This disposer uses anti-jam swivel impellers that make a clicking sound as they swing into place. This indicates normal operation.

1. Remove the sink stopper and turn on a medium flow of cold water.
2. Turn the switch to **ON**.
3. Scrape in food waste. To speed up food waste disposal, cut or break up large bones, rinds and cobs. Large bones and fibrous husks require considerable grinding time and are more easily thrown away with other trash. Do not be alarmed that the disposer slows down while grinding. The disposer is actually increasing torque (grinding power) and is operating under normal conditions.
4. Before turning the disposer off, let the water and the disposer run for approximately 25 seconds after shredding stops. This assures that all waste is thoroughly flushed through the trap and drain.
5. Do not use hot water while running the disposer. Cold water will keep food waste and fats solid so they can be flushed down the drain.
6. This model is designed for intermittent usage only and is not rated for continuous commercial usage.

TROUBLESHOOTING

Before seeking repair or replacement, we recommend that you review the following:

Loud Noises (other than those during grinding of bones and fruit pits): These are usually caused by accidental entry of spoon, bottle cap or other foreign objects. To correct this, turn off disposer and water. After disposer has stopped, remove splash guard, remove object with long handled tongs, and replace splash guard.

Unit Does Not Start: With the splash guard removed, check to see if the turntable will move freely using a broom handle. If the turntable moves freely, replace the splash guard and check the reset button to see if it has been tripped. The reset button is red and located opposite the discharge elbow, near the bottom of the disposer. Push the button in until it clicks and remains depressed. If the reset button has not been tripped, check for a shorted or broken wire connecting to the disposer. Check the electrical power switch, fuse box or circuit breaker. If wiring and electrical components are intact, the unit may have internal problems that require service or replacement.

If The Turntable Does Not Turn Freely: Check for an object lodged between the turntable and the grind ring. Dislodge the object by moving the turntable with a broom handle. Then remove the object. If no foreign object is present, there may be internal problems.

Leaks: If the unit leaks on the top, it may be due to:

- Improper seating of sink flange
- Support ring not tightened properly
- Defective cushion mount

If unit leaks at the waste elbow, leak may be due to improper tightening of elbow flange screws.

CLEANING AND MAINTENANCE

The disposer is self cleaning and scours itself with each use. NEVER put lye or chemical cleaners into the disposer, as they cause serious corrosion of metal parts. Your disposer, is equipped with a removable splash guard for ease of cleaning or replacement. Remove the splash guard by pulling it out from the top. To replace, insert into the sink flange and push down until it is properly seated. If an odor develops, run orange or lemon rinds through the disposer. A dozen ice cubes sprinkled with a little household scouring powder will also work.

GUARANTEE TERMS AND CONDITIONS

1 year from the date of the purchase. Electrolux will replace the entire disposer if there is a defect in materials or workmanship relating to functional parts only (appearance parts are excluded).

Attention:

This guarantee card, proves the originality of your waste disposer and must be completed and kept in good condition by the purchaser so as to be shown on a future demand.

Guarantee terms:

1. The waste disposer must be correctly installed by an authorized technician, in accordance with the installation instructions.
2. Purchase date is considered the date written on the invoice or retail sales receipt; on which the purchase date, dealer name and sink identify particulars must be clearly visible.
3. Any replaced faulty waste disposer, becomes property of the company.
4. Replacement of the waste disposer shall only be approved by the company in cases where proper repairing of the damage is impossible.

What Electrolux Will Not Cover:

- Training on how to use the waste disposer
 - Labour costs for the removal or reinstallation
 - Improper installation, delivery or maintenance
 - Failure of the product if it is abused, misused, or used for other than the intended purpose or used commercially
-
- **Replacement of house fuses or resetting of circuit breakers**
 - **Damage to the product caused by accident, fire or flood**
 - Incidental or consequential damage caused by possible defects with this appliance
 - Damage caused after delivery



Contact us:

Electrolux Macedonia



**Brakja Mingovi 18
Bitola**



+389 70 237108



electrolux@t-home.mk



www.electrolux.mk