

# Tumble dryer

## T4190

### Features and benefits

- Selecta Microprocessor control
  - Up to 9 tailor made programs for any drying need
  - Accurate temperature control for unmatched drying accuracy
  - Anti-crease cycle for avoiding creasing if the dryer is not unloaded
  - Error codes for easy trouble shooting
- High productivity – 2 full loads per hour
- Low energy consumption for optimal efficiency
- Selection of temperature and time for easy operation
- Customized user panels for specific user needs – available for Coin – AHL (apartment house laundry) – OPL (on premises laundry)
- Residual Moisture Control for an accurate drying result and a low energy consumption
- Reversing drum for less tangling of large items
- Reversible door hanging for a convenient laundry flow
- Easy access to vital parts from front and rear for simple servicing
- Serviceprogram for adjustment of 20 parameters eg. temperature and cool-down time



### Main options

- Stainless steel front
- Stainless steel drum
- Payment: coin-meter, chipcard reader, CP connection
- Stainless steel base frame
- Separate condense system
- Fresh air intake

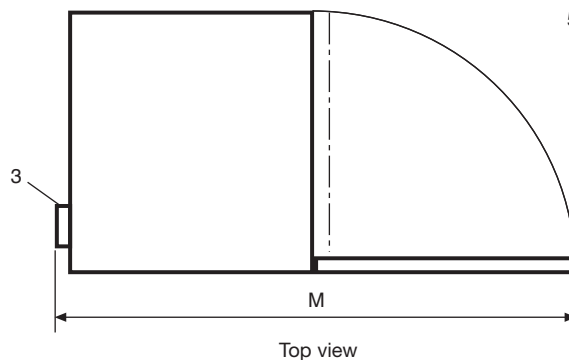
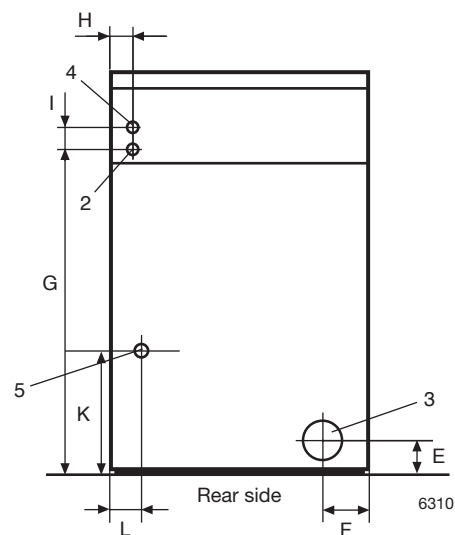
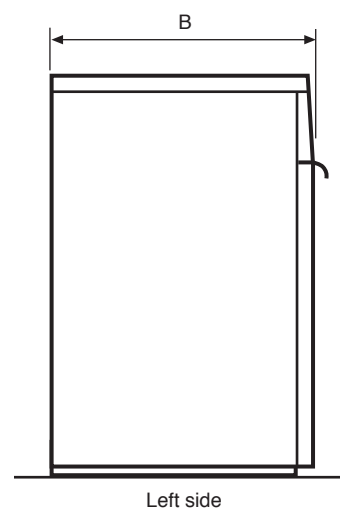
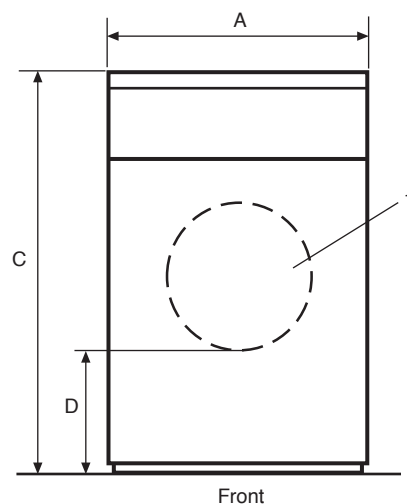
Main specifications		T4190			
Rated capacity, filling factor 1:25	kg/lb	7.6/17			
Drum volume	litre	190			
Drum diameter	mm	680			
Heating, electric	kW	6/8			
gas	BTU/h (kW)	20500/27300 (6/8)			
Consumption data*		6kW	8kW	Gas 6 kW	Gas 8 kW
Total time full load	min	35	27	36	29
Energy consumption full load	kWh	3.45	3.53	0.15	0.12
Evaporation	g/min	102	129	106	131
Energy kWh/litre water evaporated	kWh	0.92	0.94	–	–
Energy BTU/litre water evaporated	kWh	–	–	3296	3359

\* At rated capacity 100% cotton load at 50% initial moisture dried to 0%.

Certified in accordance with ISO 9001 and ISO 14001 and approved IP X4.

Electrical connections			T4190
Heating Voltage			
El.	230-240V 1AC 50/60 Hz	kW (A)	6.3 (35)
	208-240V 3AC 60 Hz	kW (A)	6.3 (20)
	230-240V 3AC 50/60 Hz	kW (A)	8.3 (25)
	400V 3NAC 50/60 Hz	kW (A)	6.3 (10)
	400V 3NAC 50/60 Hz	kW (A)	8.3 (16)
Gas	230-240V 1AC 50/60 Hz	kW (A)	0.25 (10)
	208-240V 3AC 60 Hz	kW (A)	0.25 (10)
	230-240V 3AC 50/60 Hz	kW (A)	0.25 (10)
	400V 3NAC 50/60 Hz	kW (A)	0.25 (10)
Gas and air connections			
Gas	ISO 7/1-R		1/2"
Gas pressure	Natural gas	Pa	2000
		mbar	20
	Propane	Pa	2800-5000
		mbar	30
Air outlet		ø mm	125
Evacuated air	6 kW	m <sup>3</sup> /h	270
	8 kW		290
Pressure drop	6 kW	Max. Pa	380
	8 kW		350
Sound levels			
Airborne sound level			
L <sub>w</sub>		dB(A)	<68
Heat emission			
% of installed power, max			15
Shipping data			
net, kg			103
crated, kg			114
crated, m <sup>3</sup>			0.8
Dimensions in mm			
A Width			720
B Depth			745
C Height			1130
D			420
E			110
F			120
G			960
H			45
I			55
K			575
L			80
M			1445
1 Door opening ø 400		4 Central payment connection	
2 Electrical connection		5 Gas connection	
3 Exhaust connection			

\* Other voltages available see installation manual.



**Electrolux**  
PROFESSIONAL