

# Electrolux Dishwashing

## Rack Type WTM200 - electric (R>L)

The Electrolux Dishwashing range is produced for customers with the highest conceivable demands for good efficiency, economy and ergonomics for dishwashing operation. The product range comprises glasswashers, undercounter dishwashers, hood type dishwashers, rack type dishwashers, flight type dishwashers and pot and pan washers. The rack type dishwasher range is designed to be easily connected with the equipment included in the Electrolux Handling System range, to create a functional and ergonomic dishwashing area. The rack type dishwasher WTM200 has a capacity up to 200 racks per hour with 2 speeds (variable on-site). The range consists of 2 electrically heated models (steam on request), in right feeding version; available with or without Energy Saving Device (ESD).



### EASY TO INSTALL

- Solid 3mm square stainless steel sub-frame with bolt-together construction that can be delivered assembled or in modules to be connected on site.
- Stainless steel wash pumps ideal for heavy duty usage installations.
- Brass inlet valves as standard for extra reliability at high incoming water temperatures.
- All rear positioned water tubes in stainless steel.
- Only one cable for electrical connection.
- Electrical and water connections centralised in one area.
- Service from the front and from the side.
- Pre-arrangements for automatic detergent dispenser, energy

management device and HACCP implementation (both basic as well as integrated system).

### FUNCTIONAL ZONES

- Separate 45 litre pre-wash zone first soil scrapping is performed. Separate zone, at less than 35°C, without detergent for maximum dirt removal and incorporates automatic partial drain.
- Power wash zone with 150 litre wash tank with 2,2kW wash pump supplying upper wash arms, 1,1kW wash pump supplying lower wash arms. Maximum Water Contact wash arms for best possible washing result.
- Rinse area equipped with the DUO-rinse system where the first ramp is filled by the re-used final rinse water, to eliminate any trace

of detergent, and the second ramp is filled by hot fresh water to guarantee sanitation of the items.

- Atmospheric boiler combined with the rinse booster pump for perfect rinsing performances in terms of sanitation, energy saving, independence from the water pressure on the network. Incorporates non-return (air gap class A) valve.
- As optional extra the WTM200 can be equipped with a Drying zone for fast and efficient drying.



**Electrolux**

**Electrolux Dishwashing**  
**Rack Type WTM200 - electric (R>L)**

**EASY TO CLEAN AND MAINTAIN**

- The rinse & wash tank is pressed with completely rounded corners and sloping base to facilitate cleaning.
- WTM200 has smooth surfaces. Main internal components made in 304 AISI stainless steel as well as the external panels.
- Wash arms and double tank filter (flat and deep box) easy to remove.
- Height adjustable stainless steel feet.
- All models finished in top quality materials with double skinned construction to aid durability and reduce noise.
- Self-draining wash pumps provide maximum hygiene.
- Hinged flap for easy access to the energy saving condenser unit.
- Large balanced inspection doors for easy access to wash area.
- Self-cleaning cycle in pre-wash, wash & rinse zones.

- Built-in rinse water heater to increase the temperature of the final rinse water.
- Electronic control panel with autodiagnostic check control.

**EASY ON THE ENVIRONMENT**

- 35mm thickness foam injection insulated doors to reduce noise and reduce heat dispersion.
- Available with version equipped with Energy Saving Device (ESD) to pre-heat the incoming cold water and to save up to 12kW of energy. ESD Incorporates a Condenser Unit to decrease temperature and humidity of the outlet hot steam.
- 98% recyclable by weight.
- CFC free packaging.
- Low noise level
- Developed and produced in ISO 9001 and ISO 14001 certified factory.

**EASY TO USE**

- Automatic start/stop function.
- Simple electric control panel.
- Counter balanced door with safety switch and easy to grip handle.

	<b>TM 00ERA 5 4108</b>	<b>TM 00ER 5 4110</b>
<b>TECHNICAL DATA</b>		
Model	Electronic -	Electronic -
Power supply	Electric	Electric
Feeding direction	from to	from to
Capacity dishes/h 1st/2nd speed	3600, 2340	3600, 2340
Capacity baskets/h 1st/2nd speed	200, 130	200, 130
Insulation	•	•
External dimensions - mm		
width	2852	2852
depth	884	884
height/with open door	1771, 2119	1771, 2119
Pre-wash		
temperature -	35	35
tank capacity - lt.	45	45
power - kW	0.23	0.23
1st wash		
temperature -	55-65	55-65
tank capacity - lt.	150	150
power - kW	3.3	3.3
Drainage		
temperature -	60-70	60-70
tank capacity - lt.	23	23
power - kW	0.35	0.35
insulating		
temperature -	80-90	80-90
oil capacity - lt.	12	12
oil power - kW	16.5	16.5
total installed power - kW	31.8	31.8
Net weight - kg.	549	549
<b>ACCESORIES</b>		
INSTALLATION NEEDED - E.D.		
E 5 IN ED - ED	864500	864500
E 7 530 370 - ED	867005	867005
	867004	867004

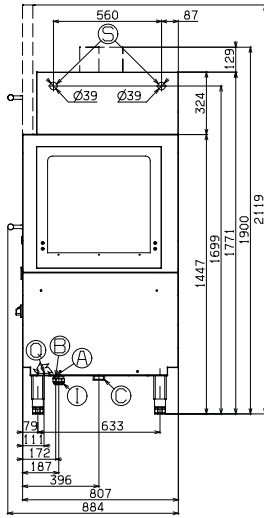
IEBC020

2005-06-17

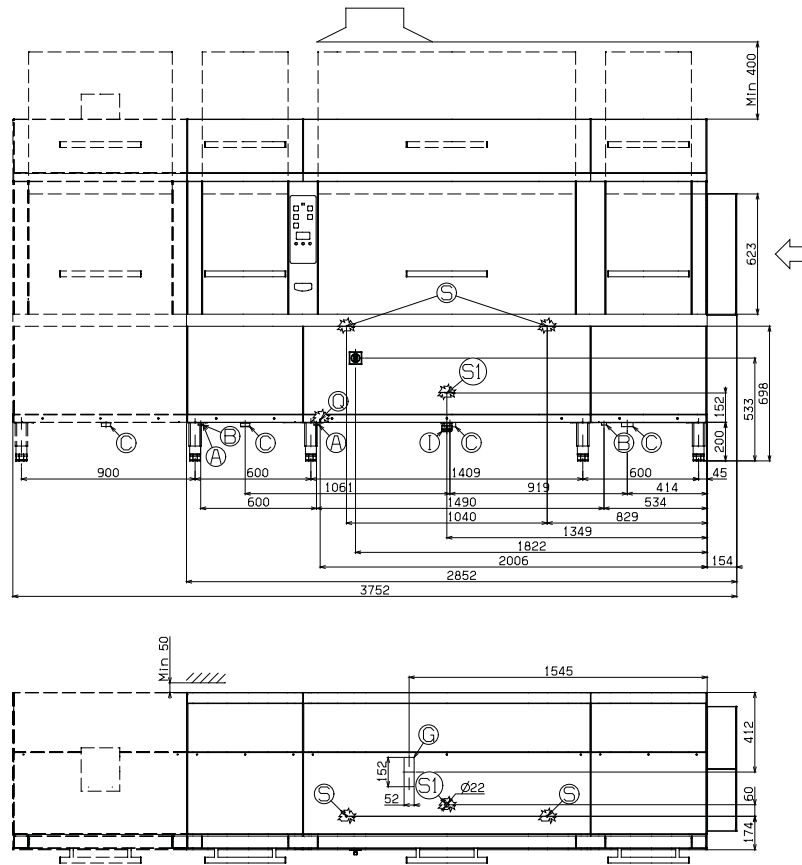
Subject to change without notice

**Electrolux Dishwashing**  
**Rack Type WTM200 - electric (R>L)**

534108, 534110



5956 547 00



IEBC020

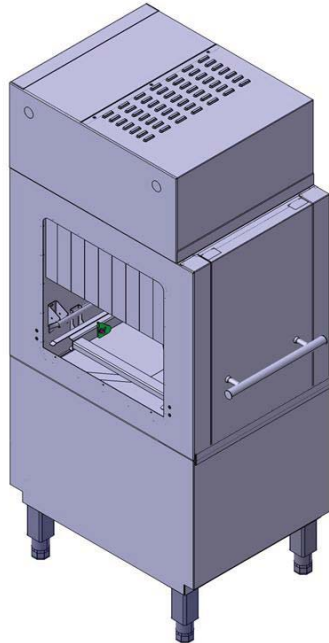
2005-06-17

LEGEND	TM 00ERA 5 4108	TM 00ER 5 4110
- ot water inlet	3/4"	3/4"
- old water inlet	3/4"	3/4"
- Water drain	1"1/2	1"1/2
I - Electrical connection	400 V, 3 N, 50	400 V, 3 N, 50

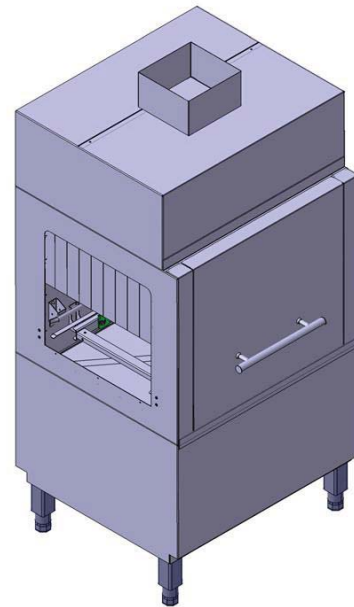
Subject to change without notice

## Air Drying Tunnel for WTM

The Electrolux Dishwashing range is produced for customers with the highest conceivable demands in efficiency, economy and ergonomics dishwashing operation. The product range comprises glasswashers, undercounter dishwashers, hood type dishwashers, rack type dishwashers, flight type dishwashers and pot and pan washers. The Air-Drying Tunnels complete the rack type dishwashing range.



864500



864510

### EASY TO INSTALL

- It is designed to be placed on any Electrolux modular (WTM) rack type dishwasher.

### EASY TO USE

- The air drying tunnel is available in two versions: 900mm for machines faster than 165 rack/hour and 600mm suited for machines slower than 165 rack/hour.
- The feeding system from the dishwasher and the curve will automatically move the racks through the Air-Drying Tunnel.

- The drying zone removes every trace of water from the crockery, through a high powered fan that extracts dry air from outside, providing dry plates at a low temperature.
- The automatic start/stop function switches off the machine when not in use, to save energy.
- Electronically controlled to optimize the drying results.

### EASY TO CLEAN

- The hygienic design provides easy cleaning through a door that gives full accessibility to the interior of the tunnel.

### EASY TO MAINTAIN

- The Air-Drying Tunnel is constructed in 304 AISI stainless steel.

### EASY ON THE ENVIRONMENT

- Developed and produced in an ISO 9001 and ISO 14001 certified factory.
- CFC free packaging.

Electrolux Dishwashing  
Air Drying Tunnel for WTM

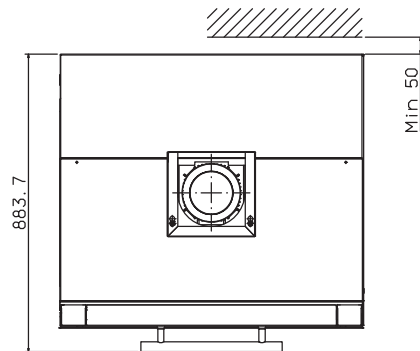
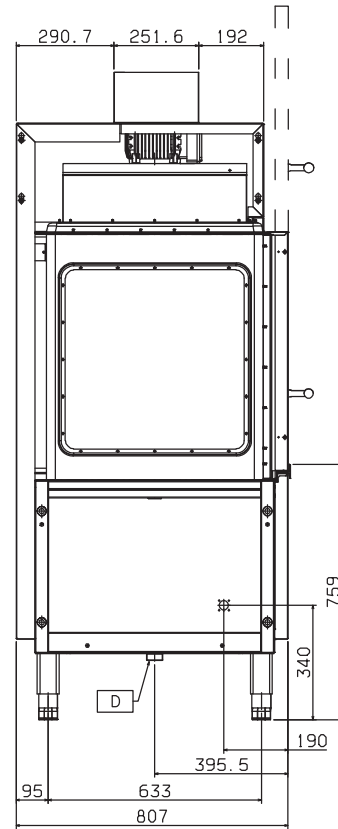
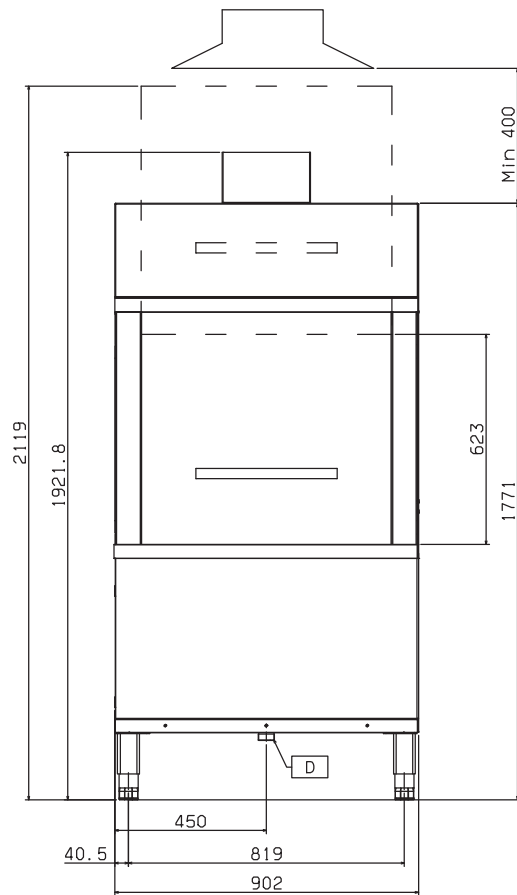
IEBG010

2007-05-02

	ADTLERMD 864500	ADTLELMD 864501	ADTERMD 864510	ADTELMD 864511
<b>TECHNICAL DATA</b>				
External dimensions - mm				
width	900	900	600	600
depth	884	884	884	884
height	1922	1922	1771	1771
Power - kW				
electric	9.4	9.4	8.5	8.5

**Electrolux Dishwashing  
Air Drying Tunnel for WTM**

864500, 864501



595660300

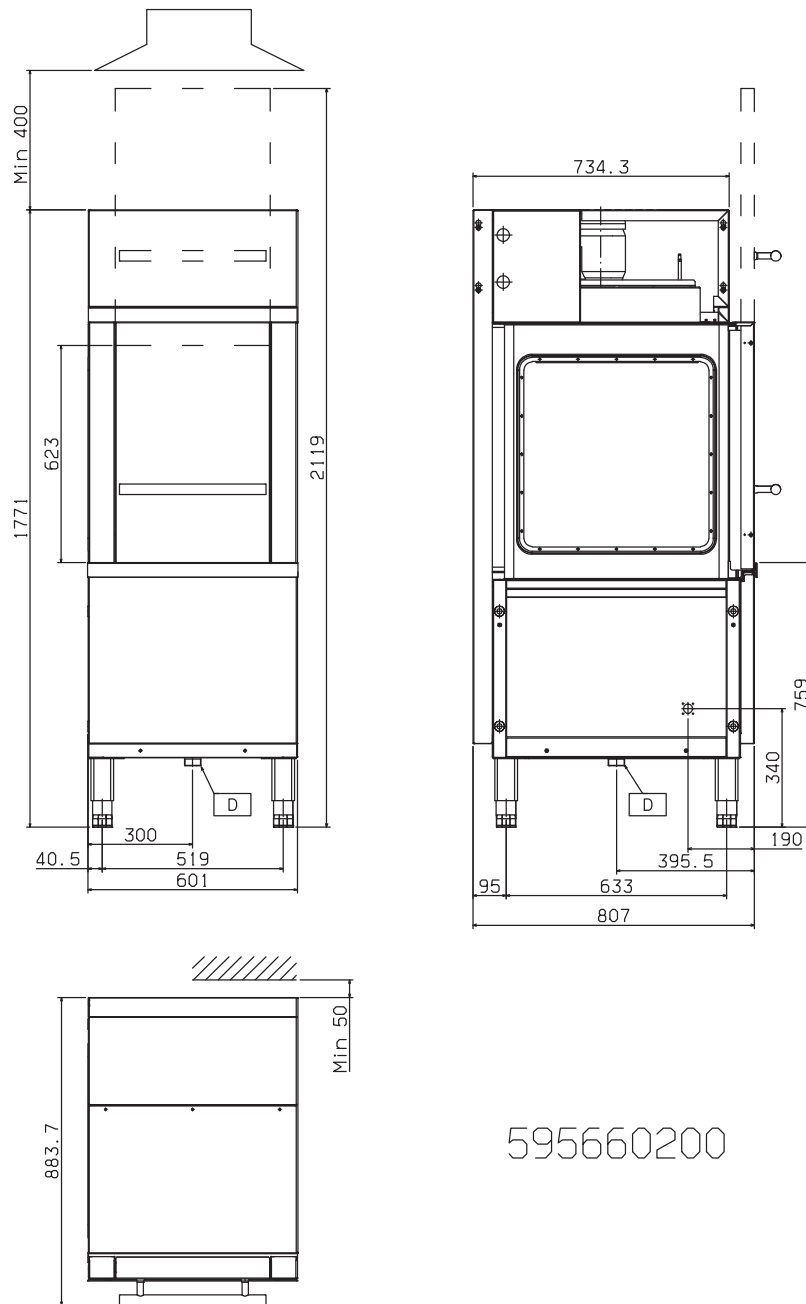
IEBG010

2007-05-02

LEGEND	ADTLERMD 864500	ADTLELMD 864501
	G 1 1/2"	G 1 1/2"
D - Water drain	400 V, 3N, 50/60	400 V, 3N, 50/60
EI - Electrical connection		

**Electrolux Dishwashing  
Air Drying Tunnel for WTM**

864510, 864511



595660200

LEGEND	ADTERMD 864510	ADTELMD 864511
	G 1 1/2"	G 1 1/2"
D - Water drain	400 V, 3N, 50/60	400 V, 3N, 50/60
EI - Electrical connection		

IEBG010

2007-05-02